

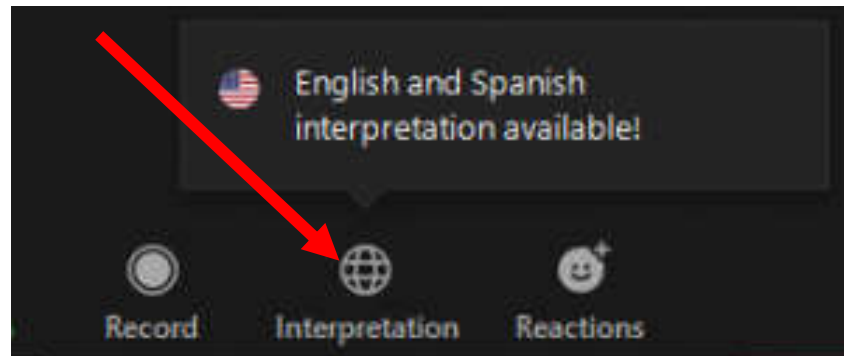
## A Learning and Sharing Café:

### Shared Responsibilities for Infant and Young Child Feeding in Emergencies - Experiences implementing the IYCF Multi-sector Framework for Action

Translation is accessible by clicking the globe icon on the bottom of your screen.

La traduction est accessible en cliquant sur l'icône du globe terrestre au bas de votre écran.

Se puede acceder a la traducción haciendo clic en el icono del globo en la parte inferior de la pantalla.



يمكن الاستفادة من الترجمة الفورية عن طريق النقر فوق  
رمز الكرة الأرضية أسفل الشاشة.

## **A Learning and Sharing Café:**

Shared Responsibilities for Infant and Young Child Feeding in Emergencies - Experiences implementing the IYCF Multi-sector Framework for Action

11 August 2021

2PM CET

## Members of the IFE Core Group Webinar Working Group



## Supporting Donors



**Note:** This webinar is made possible by the generous support of all of our donors, however, the contents are the responsibility of the GNC Technical Alliance and the individual presenters and do not necessarily reflect the views of these donors.

## Objectives - Sharing and Learning!

- Raise awareness on multi-sector programming responding to the needs of infants under two, their mothers and care providers
- Share lessons learned and best practices on IYCF-E multi-sectoral programming and provide country level examples.
- Galvanise actors to implement evidence-based effective IYCF-E multi-sector programmes.

# Webinar Agenda

- Introduction to the Sharing and Learning Cafe
- Introduction to World Breastfeeding Week
- Activity
- IYCF-E framework - an opportunity to apply the ‘shared responsibility’
- Uganda Case Study
- Ethiopia Case Study
- Panel
- Q&A
- Closing

**Today's  
Presenters,  
Panel  
members  
and  
Facilitators**



**Deborah Joy Wilson**

Maternal, Infant and Young Child Nutrition  
Specialist  
WFP HQ



**Sarah Butler O' Flynn**

Director, Emergency Nutrition  
Department of Global Health  
Save the Children



**Isaac Kabazzi**

Associate Nutrition and Food  
Security Officer  
UNHCR Uganda



**Millicent Kavosa Lusigi**

Food security and Nutrition  
officer: Ethiopia Gambella  
UNHCR



**Kelsey Grey**

MAMI Global Network  
Coordinator (maternity  
cover)  
Emergency Nutrition  
Network (ENN)



**Armelle Sacher**

Social and Behavior Change  
& Gender Transformation  
Senior Technical Advisor  
Action against Hunger



**Linda Shaker Berbari**

IFE Core Group Facilitator /  
Consultant  
Emergency Nutrition  
Network (ENN)

- 1-7 August
- WHA target by 2030 to “increase the rate of exclusive breastfeeding in the first 6 months up to at least 70%”



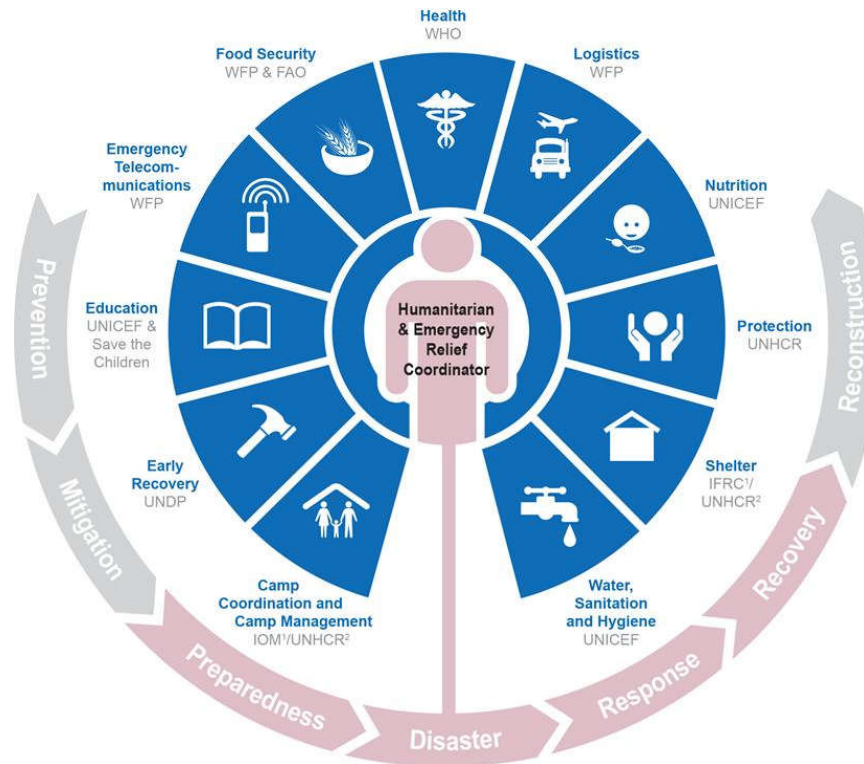
- **In emergency contexts**, it is particularly important that an integrated multi-sectoral approach is implemented → **Shared responsibility**

- Breastfeeding protection, promotion, and support should be the centre-point of any public strategy and policy on infant and young child feeding.
- **A multi-faceted approach is required.**

# Mentimeter

Go to [www.menti.com](http://www.menti.com) and enter this code: 4523 9381

**Share one key activity for integrating maternal and child nutrition into different sectors (e.g. WASH, Health, Food Security, Protection etc.)**





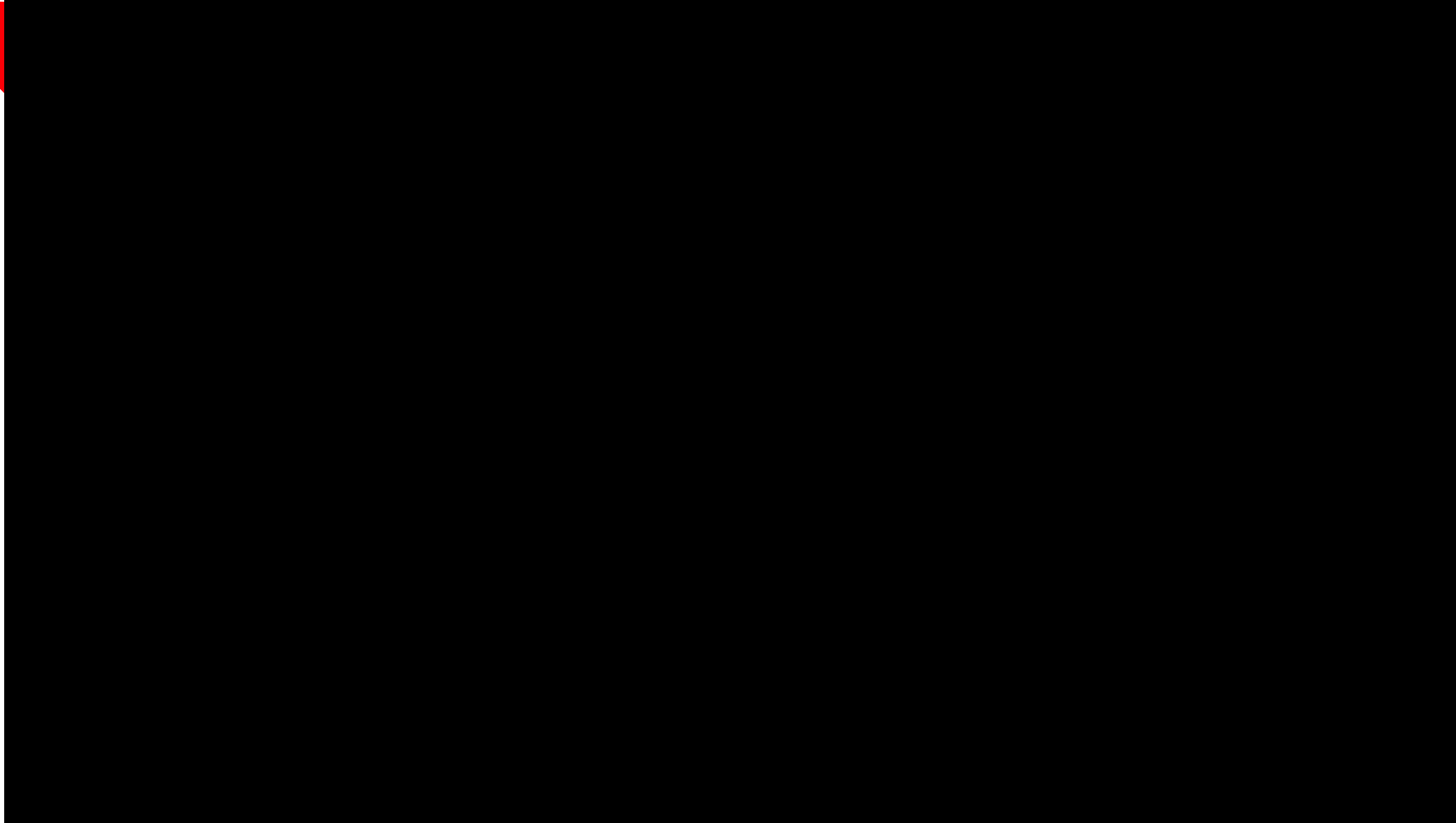
# Infant and Young Child Feeding in Refugee Situations: A Multi-Sectoral Framework for Action





The framework provides guidance to **managers and technical staff across sectors** on what needs to be considered to create an **IYCF friendly environment** and facilitate **optimal IYCF** and **child survival**.

# IYCF Framework Orientation Video



# IYCF Framework: A Multi-sectoral Framework for Action



- **Action 1:** Advocate for relevant stakeholders to consider IYCF
- **Action 2:** Mobilize resources for IYCF
- **Action 3:** Endorse key policies and adhere to operational standards
- **Action 4:** Select appropriate IYCF activities
- **Action 5:** Integrate IYCF with other sectors
- **Action 6:** Coordinate IYCF-sensitive activities
- **Action 7:** Implement monitoring, evaluation, accountability and learning

# IYCF Framework: How and where is it applied?

## Piloted in 2015:

– Kenya (Dadaab), Bangladesh (Cox Bazaar) and Jordan (Za'atari)

## • East Africa Regional Roll Out in 2017/8:

– Kenya (Kakuma), Ethiopia (Gambella), and Uganda (Yumbe, Arua)

## • First phase emergency roll out 2017:

– Cox's Bazar, Bangladesh

## • East Africa Roll Out in 2019

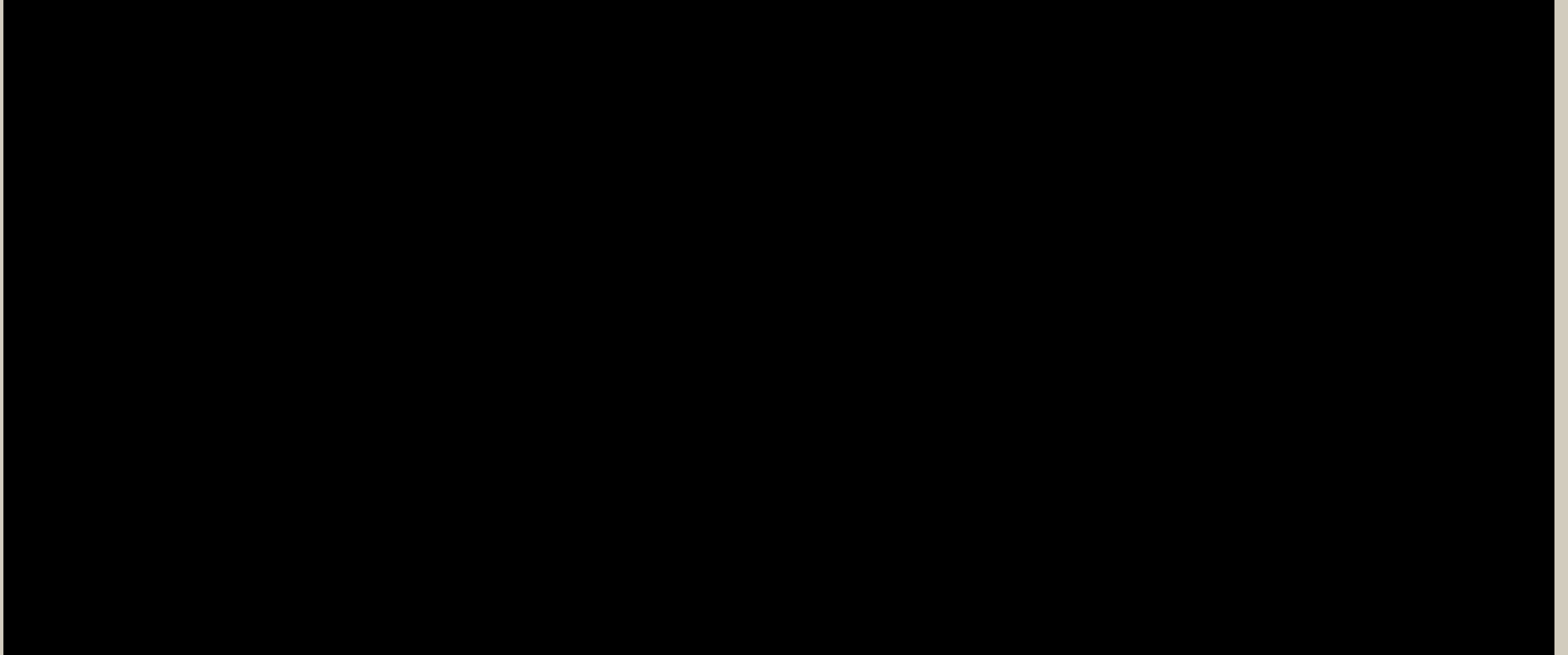
– Rwanda (Mahatma), Uganda (Palabek)

## • COVID Response 2020

– COVID Adaptations Briefer



# VIDEO – The IYCF Framework in Action



# IYCF-E Multi-sectoral Framework for Action

**UGANDA**

Isaac Kabazzi  
Associate Nutrition and Food Security Officer  
UNHCR Uganda

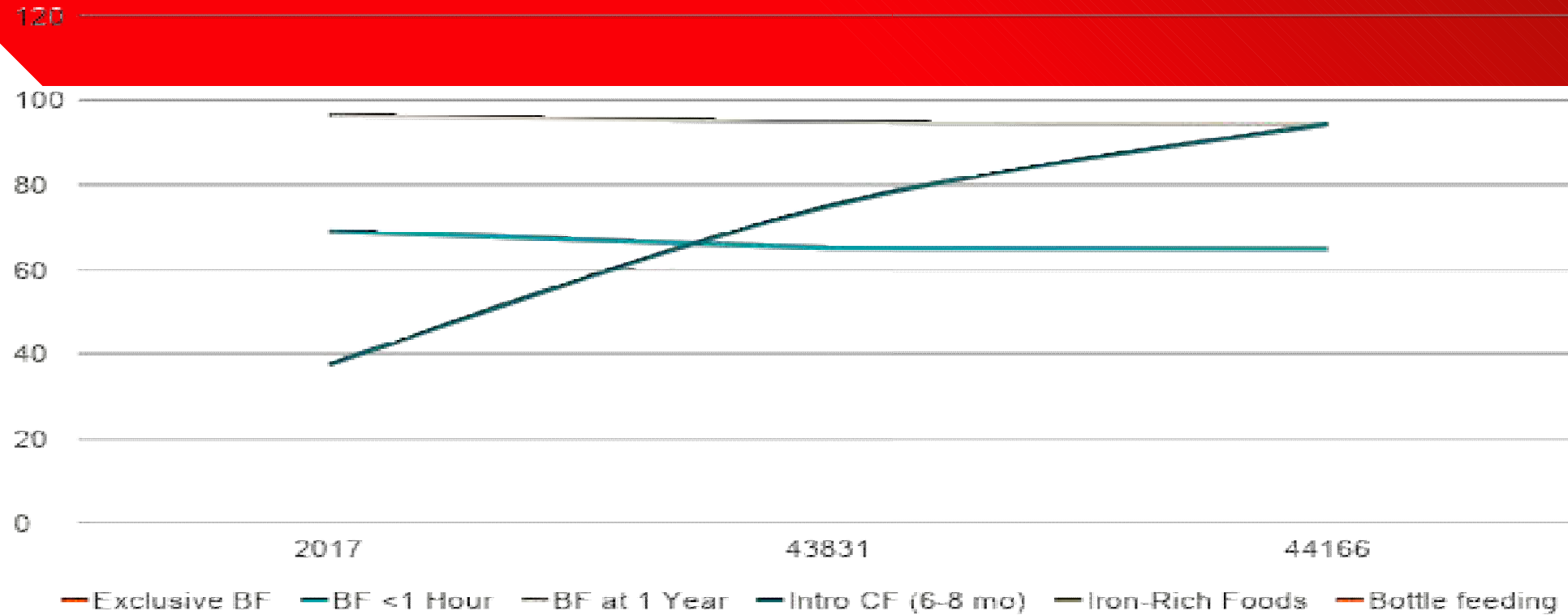
# Background

- Framework launched in 2017, pilots in Bidibidi, Rhino Camp and Palabek.
- Choice of region
- Key stakeholders trained, IYCF champions selected
- Multisectoral coordination approach
- Impact of COVID-19



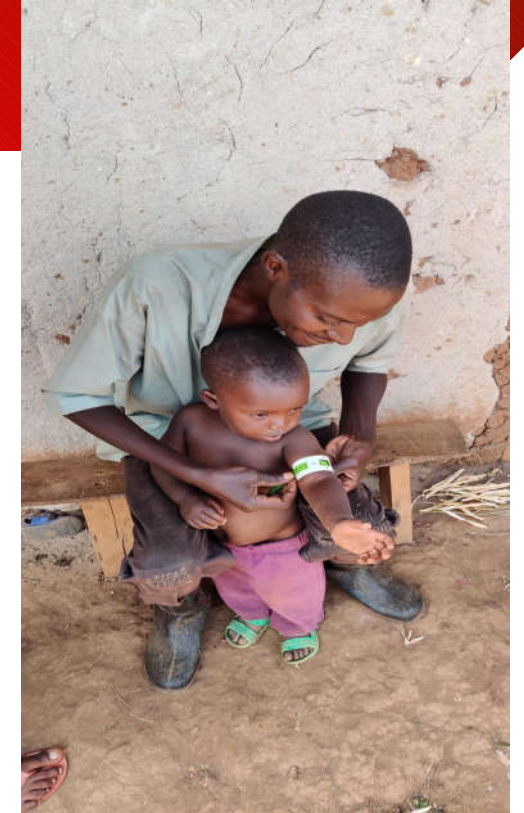


# IYCF indicator trends – Palabek



# Health and Nutrition

- Strategic prioritization of prevention and investment
- Creation of MBAs – funding dependent
- Scale-up of Care Groups, enhancing role of fathers.
- Development, translation of IYCF IECs and curriculums



# Health and Nutrition cont'd

- Prioritization of PLWs, children
- Linkage to livelihoods, nutrition-sensitive food systems, CBI
- Regulation of BMS code
- Special commemorations
- Prioritization of IYCF in SENS, KAP



# Food Security

---

- **IYCF Sensitization**
- Prioritization of PLW & minors, food assistance SOPs
- Infrastructure: MBAs/sheds at FDPs –*funding dependent*
- Enhanced role of Child Protection, referral pathways
- Future UNHCR-FAO collaboration on energy-efficient cooking among caregivers, cooking demos

# Protection

- Bridging actions of Nutrition and Child Protection, tapping resources
- Protection of BMS code
- Aligning the IYCF referral mechanisms
- Advocacy for MBAs/ECDs at Transit/Reception centers



# WASH and Education

- Nutrition and WASH education
- Screening for malnutrition
- Child friendly spaces
- Mainstreaming IYCF in WASH promotion
- Investment in WASH items.



# Advocacy and Coordination

- **Enabling environment**
- Collective actions from Government, UN, partners, refugees
- Support in fighting IYCF-related violations
- National IYCF guidance in the EVD, COVID-19 contexts
- Multisectoral implementation of the MIYCAN guideline

**Infant and Young Child Feeding (IYCF) Recommendations in COVID-19 Context**  
Guidelines for Health workers

**KEY FACTS ABOUT COVID-19 TRANSMISSION**

- COVID-19 virus has **NOT** been detected in breastmilk
- COVID-19 is **NOT** transmitted to the foetus/infant through pregnancy, delivery or breastfeeding
- For all infants and young children, breastmilk provides a strong immune system to fight against infectious diseases including COVID-19
- During COVID-19, standard infant feeding guidelines should be followed with appropriate precaution for infection prevention and control

**IYCF recommendations in the COVID-19 context**

**Negative, suspected, probable, or confirmed COVID-19 mother and/or child 0-23 months**

- Support the mother to initiate breastfeeding within one hour after birth
- Counsel the mother to **ONLY** feed breast milk to her infant for the first six months of age
  - Encourage the mother to initiate complementary feeding at six months of age while continuing breastfeeding (i.e. breast milk + adequate, nutritious, safe, and varied foods)
  - Encourage mother to increase the frequency of breastfeeding to increase intake
  - Encourage the mother to feed the child on appropriate complementary foods three or more times a day
  - Provide breastfeeding counseling to the mother
- Provide psychosocial support to both the mother and child
- Encourage mothers to continue breastfeeding during and after recovery from COVID-19

**Suspected, probable, or confirmed COVID-19 infected mother unable to continue breastfeeding**

- Support the mother to express breastmilk and feed the child if she is able to do so
- Support the mother to start replacement feeding with an appropriate breastmilk substitute if the infant is less than 6 months of age and the mother is NOT able to express breastmilk
- Counsel the mother to provide ultra-heat treated (UHT) milk and safe, adequate complementary food to all children 6-23 months of age
- Provide psychosocial support to both the mother and child

**Infection prevention and control (IPC) and infant and young child feeding**

- Encourage the mother to use a medical mask when feeding or near the child if she has respiratory symptoms
- Encourage the mother to wash hands with soap and running water before and after contact with the child
- Counsel mother to regularly clean surfaces and other areas of contact for both mother and child with soap and water
- Counsel mother to regularly wash both the mother and child's clothes with soap and water

UNICEF/WHO recommend the use of Ready-to-use-infant formula (RUIF)

Logos: unicef for every child, World Health Organization, UNHCR The UN Refugee Agency, WFP World Food Programme

# Challenges

- M&E results framework, periodic review
- Funding gaps in the EHAGL region
- Continuous engagement of champions
- COVID-19







# IYCF FRAMEWORK IMPLEMENTATION ETHIOPIA EXPERIENCE

# PARTNERS



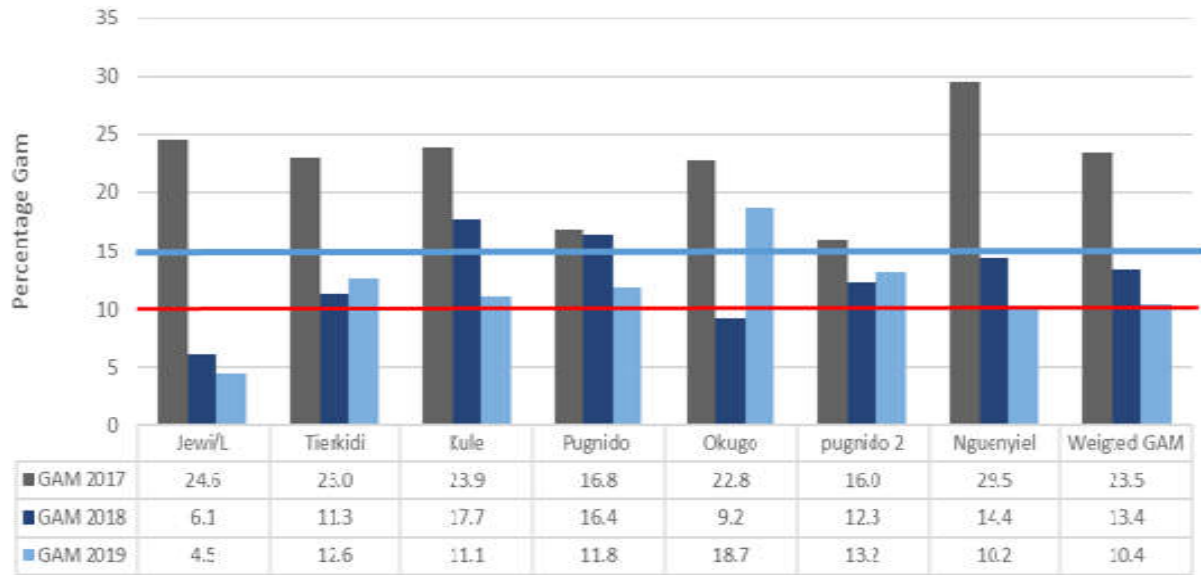
# 1. Multisector Assessments and Evaluation as a pillar to drive IYCF needs with Sectors, Donors and beneficiaries

- Impact: SENS surveys annually; KAP, NCA
- Impact: Nutrition evaluation with Focus on IYCF framework and care pathways
- Routine: IYCF: data management tools facility and community actions
- Joint quarterly/bi-annual program monitoring covers IYCF at facility and community level
- Effect: Evidence based programs on caring practices: TCG; CBI, FMUAC etc

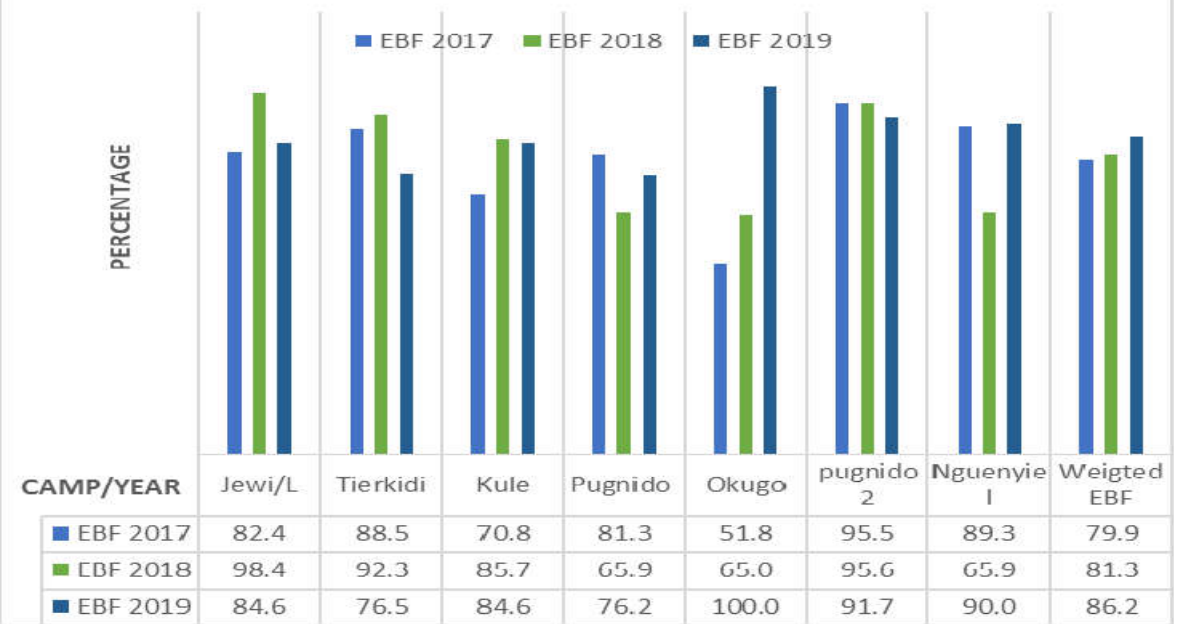


# Multisector Assessments and Evaluation as a pillar to drive Nutrition including IYCF needs with Sectors, Donors and beneficiaries

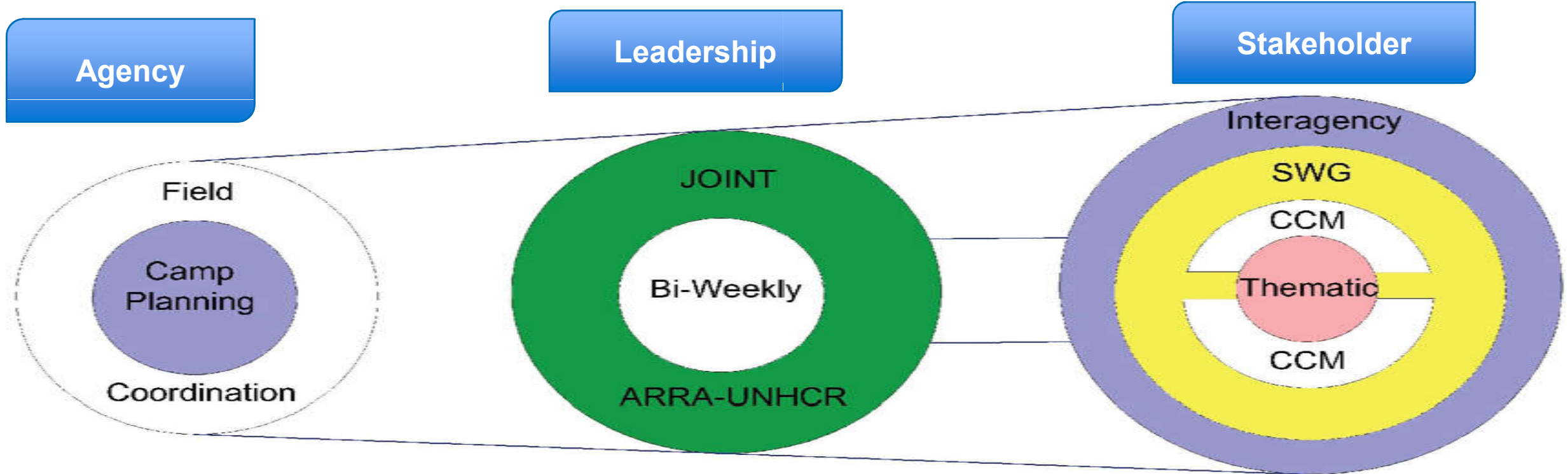
GLOBAL ACUTE MALNUTRITION TRENDS 2017 TO 2019 GAMBELLA CAMPS CHILDREN 6-59 MONTHS



EBF TRENDS GAMBELLA CAMPS 2017 TO 2019 0-5.99 MONTHS



## 2.Coordination, stakeholder engagements and IYCF partnerships prioritised



### 3.SECTORS: Intersectoral and sectoral engagements to drive Nutrition specific and nutrition sensitive interventions

#### A. COMMUNITY BASED PROTECTION & COMMUNITY STRUCTURES

- **Community:** Refugee central committees (RCC) and Community Outreach Agents (COAs) as key for interphase
- **Primary:** Mother through MTMSG (FMUAC; SBCC)\_1025
- **Secondary:** Fathers through FTFSGs (26)
- **MAMI:** GOAL initiative cascaded in all camps



## B.FOOD SECURITY AND LIVELIHOODS



- Nutrition sensitive livelihood program to scale 2021 incorporating refugees and hosting communities for agriculture
- Backyard gardening and Group backyard gardening programs
- CBI nutrition sensitive programs e.g Toddler care Broups (TCG) and Electronic Fresh Food vouchers (eFFVs)

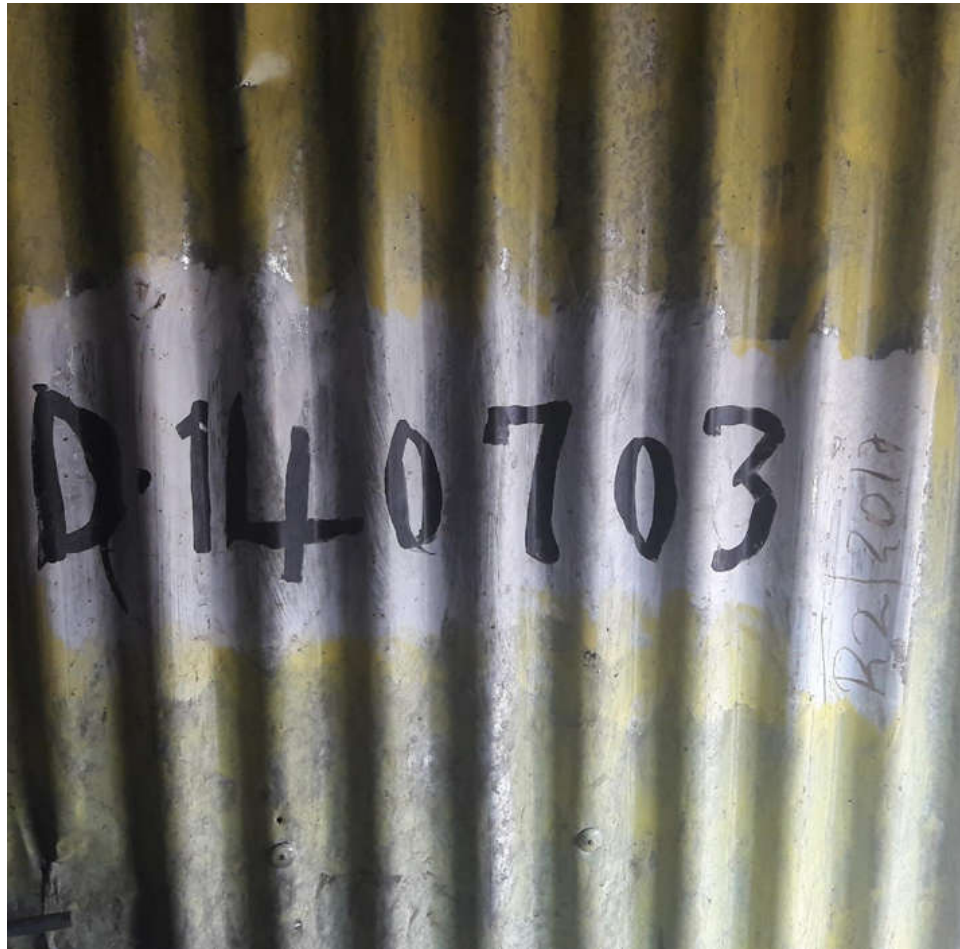
## C.WASH, NUTRITION AND HEALTH:

- Joint strategic context workshop including the IYCF framework as viable strategy 2018, 2019 and 2021
- Joint health, WASH and Nutrition messages e.g Joint epidemic response e.g COVID 19, measles, Malaria
- MEAL with focus on experience sharing and learning: BFS ( baby friendly spaces), MHPSS ( Mental health and psychosocial support), WHZ/MUAC screening, EPI corners, GMP etc





## D. CAMP MANAGEMENT AND SHELTER:



- New arrivals prioritized for shelter allocation
- **Household addressing** for easy access and follow up of beneficiaries
- Camp officers lead the public health thematic meetings better understanding of needs for advocacy

#### 4.Funding for IYCF Prioritised

- UNHCR Country Operational Plan (COP),Regional Response Plans (RRP); UNHCR Multiyear Multi partner protection Solutions Strategic Plan (MYMPSSP) have IYCF indicators.
- IYCF-E at reception centres integrated in nutrition specific programs



# IYCF Framework Resources

<https://iycfehub.org/infant-and-young-child-feeding-framework/>

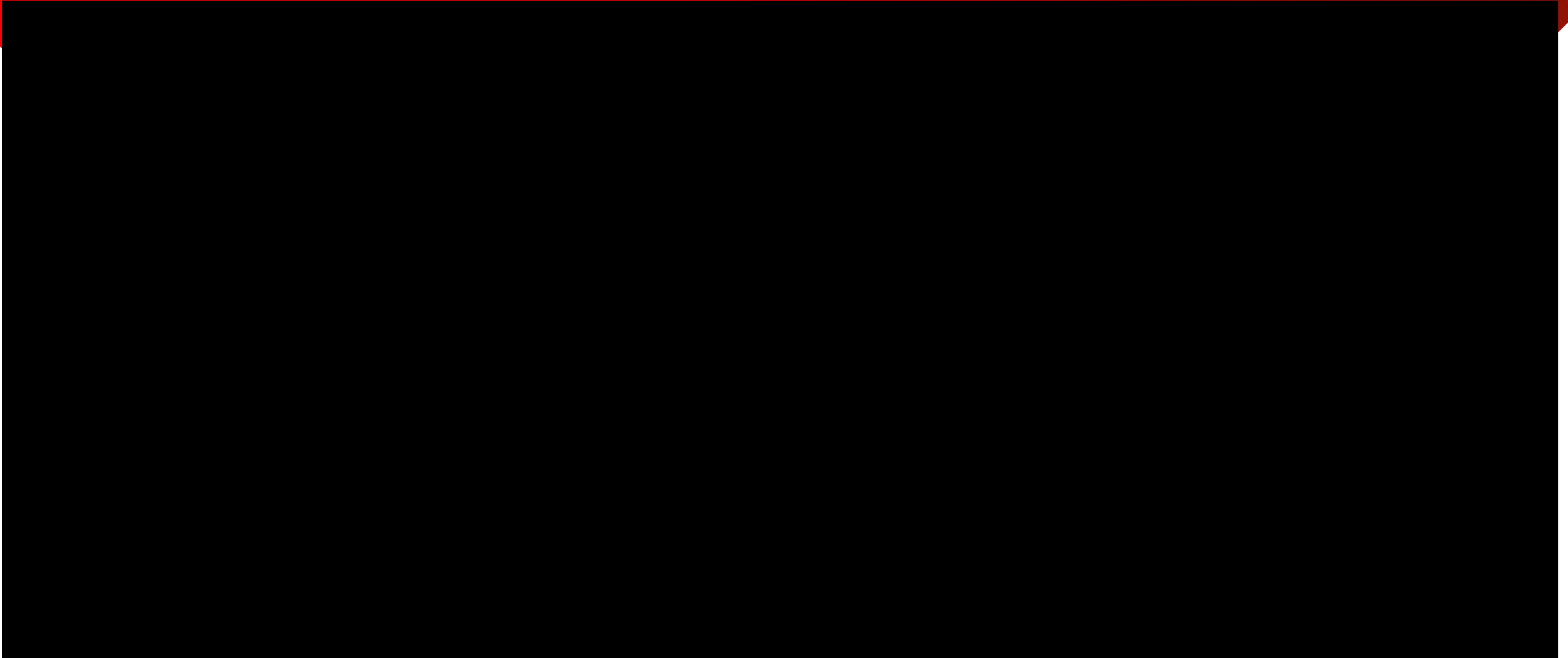
## Resources Available:

- IYCF Framework
- Two-Pagers per Sector
- IYCF Framework: COVID Adaptations Briefer
- IYCF Framework Orientation Video
- IYCF in Action Videos



# VIDEO – Nyathak and her triplets

---



**THANK YOU**



**Save the Children®**

**Today's  
Presenters,  
Panel  
members  
and  
Facilitators**



**Deborah Joy Wilson**

Maternal, Infant and Young Child Nutrition  
Specialist  
WFP HQ



**Sarah Butler O' Flynn**

Director, Emergency Nutrition  
Department of Global Health  
Save the Children



**Isaac Kabazzi**

Associate Nutrition and Food  
Security Officer  
UNHCR Uganda



**Millicent Kavosa Lusigi**

Food security and Nutrition  
officer: Ethiopia Gambella  
UNHCR



**Kelsey Grey**

MAMI Global Network  
Coordinator (maternity  
cover)  
Emergency Nutrition  
Network (ENN)



**Armelle Sacher**

Social and Behavior Change  
& Gender Transformation  
Senior Technical Advisor  
Action against Hunger



**Linda Shaker Berbari**

IFE Core Group Facilitator /  
Consultant  
Emergency Nutrition  
Network (ENN)

# Q&A



Please fill out the brief webinar evaluation  
*it will take less than 5 minutes*  
*(it will pop up when you close the webinar)*



## Looking for support in Nutrition in Emergencies?

	Type of supported needed	Provider
1	I want remote or in-country technical support	Technical Advisors, SMART, or others through the GNC Technical Alliance
2	I want to hire a consultant directly	GNC Technical Alliance Consultant Rosters
3	I want quick technical advice	GNC HelpDesk
4	I want peer support	<a href="http://www.en-net.org">www.en-net.org</a>

Visit: <https://ta.nutritioncluster.net/> and click "Request Support"