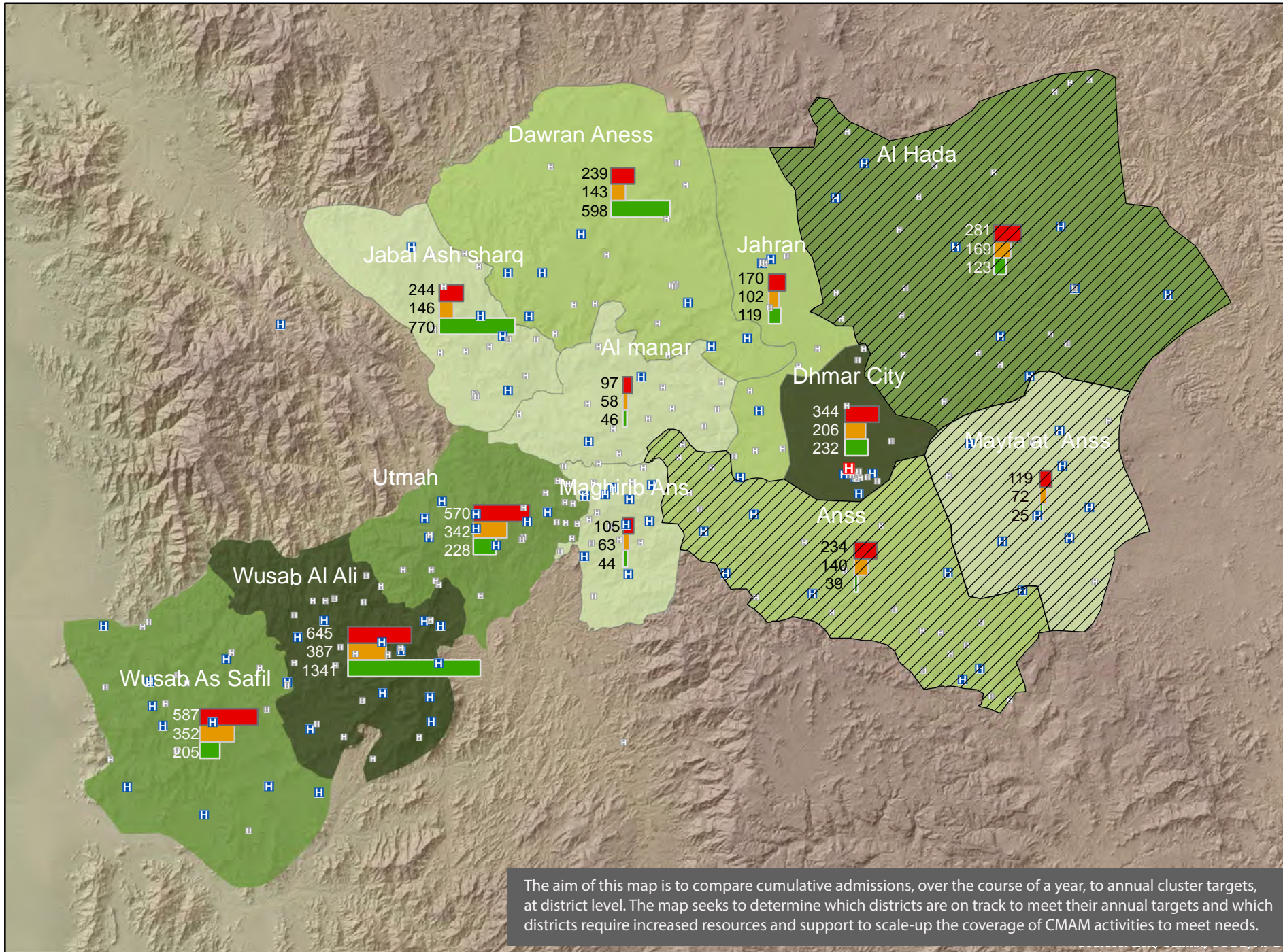


# Progress towards annual SAM admission targets by district- May 2013 - Dhamar Governorate, Yemen



### Legend

- Stabilization Center
- Health Facilities with OTP
- Health Facilities without OTP
- Governorate Boundary
- District Boundary
- Hard to Reach Area

### Population 6-59 month

- < 20,000
- 20,001 - 30,000
- 30,001 - 40,000
- > 40,000

- Projected # SAM U5 cases 2013 (PiN)
- Targeted # SAM U5 cases 2013 (cluster target)
- # SAM U5 cases admitted (Jan 2013 to date)

### Map data source(s):

Total population: Government Statistics Department (CSO)

Population 6-59 mo: 18% of total population

% SAM: Dhamar May 2013 SMART survey

Projected # SAM U5 cases 2013 (People in Need) :  $US\ pop \times \% SAM \times 1.6$

Targeted # SAM U5 cases 2013 (Cluster Target):  $US\ pop \times \% SAM \times 1.6 \times 0.6$  (Nutrition Cluster 60% target)

# SAM U5 cases admitted (Jan 2013 to date) : Yemen Nutrition Cluster Reporting Database

### Dhamar Governorate

### Map Scale

10 Kilometers

The designations employed and the presentation of material on this map do not imply the expression of any opinion whatsoever on the part of the Secretariat of the United Nations concerning the legal status of any country, territory, city or area or of its authorities, or concerning the delimitation of its frontiers or boundaries.

**Yemen Nutrition Cluster**  
 May, 2013

The aim of this map is to compare cumulative admissions, over the course of a year, to annual cluster targets, at district level. The map seeks to determine which districts are on track to meet their annual targets and which districts require increased resources and support to scale-up the coverage of CMAM activities to meet needs.