

July 2019

# Regional Coordination of Evidence Generation on Simplified Approaches

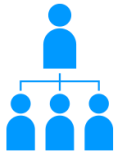
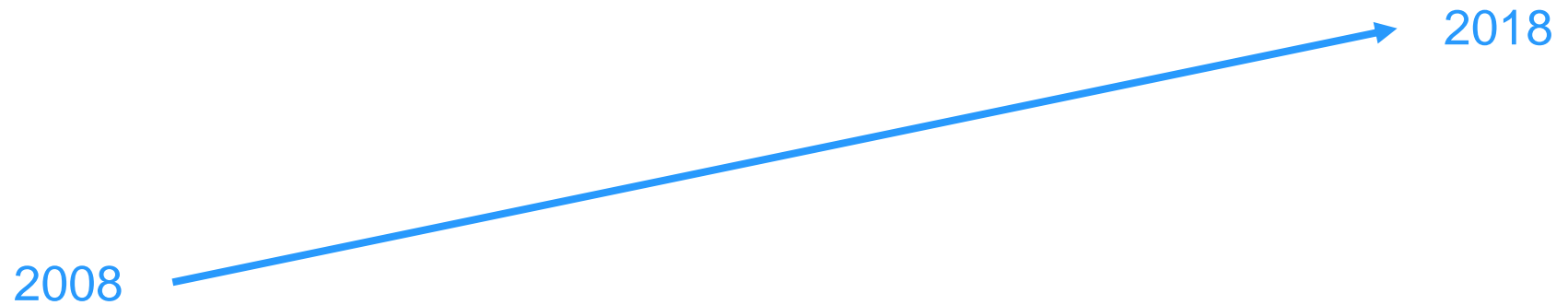
Sophie Woodhead

unicef  | for every child

© UNICEF/UNI197921/Schermbrucker



# Rationale for Simplified Approaches to Manage Acute Malnutrition



# What do we mean?



**SIMPLIFIED APPROACHES**

# What have these simplifications looked like across Sub-Saharan Africa?

	<b>Simplification</b>
Diagnosis	<i>Screening of Acute Malnutrition by the Family at community level</i>
Admission	<i>Services implemented in the same delivery point</i>
	Delivery of AM management by Community Health Workers
	<i>Harmonisation of client registers/tools and monitoring</i>
	Admission for all children MUAC <125mm and/or oedema
Treatment	Use of one LNS product for treatment
	Treatment dosage of LNS product reduced over course of recovery
	<i>Reduced visits to health facility during treatment</i>
Discharge	Based on MUAC > 125mm only

# Evidence Generation to Respond to Identified Gaps



STUDY	PARTNERS
Individual Pooled Data Analysis on children dosage reduction	ALIMA (Universite de Bordeaux), Project Peanut Butter, IRC, UNICEF
An Exploratory Analysis Study Comparing Acute Malnutrition Prevalence based on Weight for Height Z Scores, Absolute Mid Upper Arm Circumference (MUAC) and MUAC for Age Indicators	Joint Research Centre of the European Commission and UNICEF
Costing and Financing of Wasting (including financial modelling on reduced dosage, expanded admission)	UNICEF + +

# Coordination and Communications from Regional Perspective

## Field Exchange

Regional perspectives on simplified approaches for the management of children with acute malnutrition: West and Central Africa

### The State of Acute Malnutrition

DATA RESOURCES EVENTS ONGOING RESEARCH PROGRAMMES & INNOVATION

### Simplified Approaches to Acute Malnutrition Treatment

Welcome to the **Community of Practice on "Simplified Approaches to Treatment Across the Continuum of Acute Malnutrition"**. This community has been created for sharing evidence, knowledge, learnings, and updates about research and implementation of simplified approaches, specifically those focused on unifying treatment of severe and moderate acute malnutrition.



## SIMPLIFIED APPROACHES TO MANAGEMENT OF ACUTE MALNUTRITION

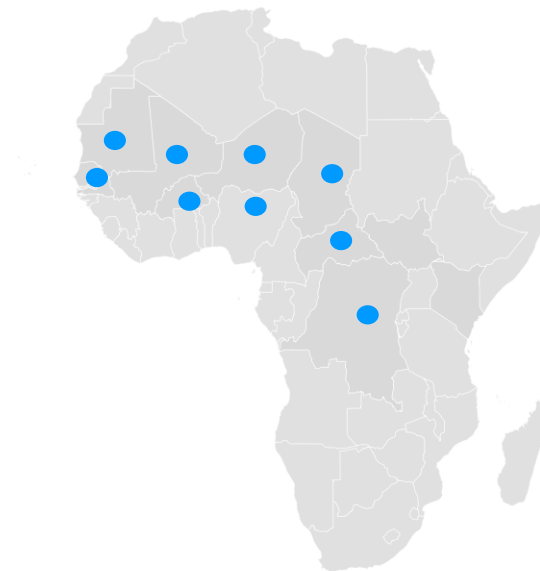
April 2019

unicef 



# Activities planned for 2019

Country	Partners
Senegal	ACF, MoH
Mali	IRC, ALIMA, ACF
Mauritania	UNICEF & NNP
Burkina Faso	TBC
Niger	ALIMA
Nigeria	UNICEF, MoH
Chad	MoH, UNICEF, WFP, IRC
CAR	MoH, UNICEF, WFP
DRC	ALIMA



# Chad

## Who?

DNTA, UNICEF, WFP, IRC

## Why?

MoH drive for simplification, after various reviews identifying key limitations in govt. capacity to integrate and implement the service

## Where?

Region of Guera in central Chad

Expect approximately 35,000

## What?

Operational pilot with 3 health districts: 1 standard, 1 RUTF, 1 RUSF  
2:1 dosage plan

## When?

Admissions in May



© GeoNames



# Mali

## Who?

IRC, ALIMA and ACF + National Piloting Committee

## Why?

Collect additional information and respond to issues regarding access and availability of services

## Where?

Nara and Bamako

Approx. 5,000 children across both

## What?

ComPAS/OPTIMA operational pilot

RUTF 2:1 dosage with Family MUAC

National Level Coordination

## When?

Dec 2018 – June 2019



© GeoNames, H

# Next Steps

1. Support WHO in the collection and generation of evidence to support existing guideline reviews
2. Support roll-out of certain simplifications where they are proven to be safe and effective
3. Conduct key learning and dissemination moments, including a regional workshop in the last quarter of 2019
4. Continue to provide technical support and coordination to partners on the implementation of and simplified approaches



Thank You

Sophie Woodhead  
[swoodhead@unicef.org](mailto:swoodhead@unicef.org)



© UNICEF/SUDA2014-XX228/Noorani